

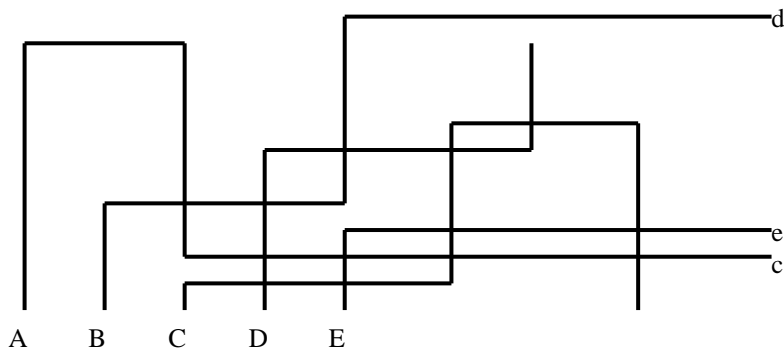
MATHEMANIA PRACTICE SET – PRIMARY LEVEL

- The numbers in each row follow a rule. Fill in the missing number: 8, 12, 16, ?, 24
 - 18
 - 20
 - 22
 - 26
 - 28
- If $\blacktriangle = 3$ and $\blacksquare = 5$, then $\blacktriangle \times \blacksquare + \blacktriangle = ?$
 - 18
 - 12
 - 20
 - 10
 - 22
- A book uses the digit '7' exactly 25 times in page numbering. What is the maximum number of pages in the book?
 - 80
 - 85
 - 90
 - 95
 - 100
- A cube has different numbers on each face. The product of opposite sides is always 20. What is the minimum total sum of all 6 faces?
 - 42
 - 48
 - 54
 - 60
 - 72
- Find X in the operation: $324 + X = 517$
 - 193
 - 183
 - 203
 - 213
 - 223
- A balance scale shows that 4 apples = 2 bananas. If 1 banana weighs 30 g, what is the weight of 1 apple?
 - 10 g
 - 15 g
 - 20 g
 - 25 g
 - 30 g

7. If $A = 4$, $B = 6$, $C = 8$, and $D = 10$, then $A + B + C + D = ?$

- A. 26
- B. 28
- C. 30
- D. 32
- E. 34

8. Which arrangement of pipes leads from the bottom to the top correctly?

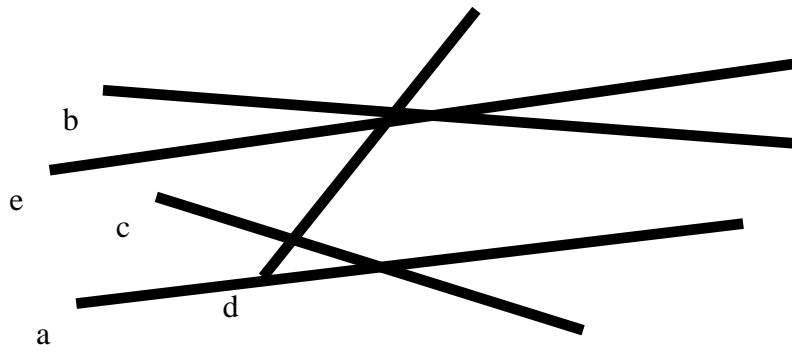


- A. ACBDE
- B. DBCEA
- C. BCEAD
- D. DCEAB
- E. DCEBA

9. A clay cube of side 5 cm is reshaped into a rectangle with base 10 cm \times 5 cm. What is the new height?

- A. 2 cm
- B. 2.5 cm
- C. 3 cm
- D. 4 cm
- E. 5 cm

10. Which labelled shelf is underneath all the others?



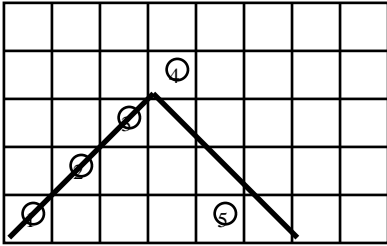
- A. a
- B. b
- C. c
- D. d
- E. e

11. Five targets were shot. Which target belonged to the winner?



- A. Target A
- B. Target B
- C. Target C
- D. Target D
- E. Target E

12. Thiri is drawing a zigzag pattern on the grid. Which point will she reach next?



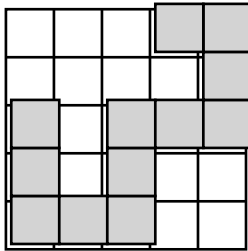
- A. 1
- B. 2
- C. 3
- D. 4
- E. 5

13. The calendar of a certain month starts on Wednesday. What day is the 24th of that month?

M	T	W	T	F	S	S

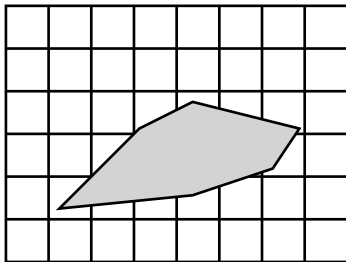
- A. Friday
- B. Saturday
- C. Sunday
- D. Monday
- E. Tuesday

14. Make a 5x5 square using identical small tiles. If 12 are already placed, how many more are needed?



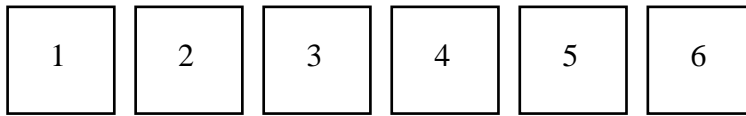
- A. 13
- B. 14
- C. 15
- D. 16
- E. 18

15. How many little circles and little squares are hidden under the blot?



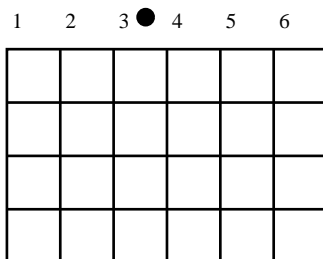
- A. 10 circles & 10 squares
- B. 9 circles & 11 squares
- C. 11 circles & 9 squares
- D. 8 circles & 12 squares
- E. 12 circles & 8 squares

16. Which 3 pieces should be used to complete the puzzle?



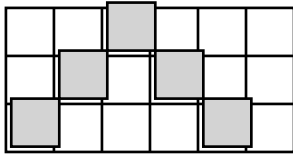
- A. 2,3 and 6
- B. 1,2 and 5
- C. 3,4 and 6
- D. 1,4 and 5
- E. 2,4 and 6

17. A ball is hit along the diagonal of the grid from pocket 3. Into which pocket will the ball fall?



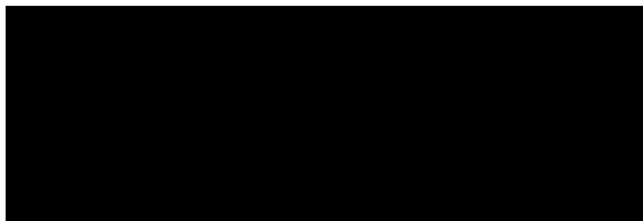
- A. 1
- B. 2
- C. 3
- D. 4
- E. 5

18. Which pattern should be placed instead of the question mark?



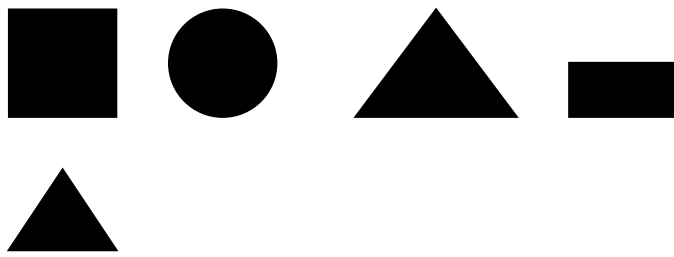
- A. A
- B. B
- C. C
- D. D
- E. E

19. A rectangle is cut by diagonals into triangles. How many triangles are there altogether?



- A. 6
- B. 8
- C. 10
- D. 12
- E. 14

20. Which of the following is different than the others?



- A. Shape A
- B. Shape B
- C. Shape C
- D. Shape D
- E. Shape E

21. Define operation $a \blacksquare b = ab - a$. If $3 \blacksquare x = 18$, find x .

- A. 5
- B. 6
- C. 7
- D. 8
- E. 9

22. Which number should be instead of a question mark in the matrix?

6	8	12
3	14	7
4	5	?

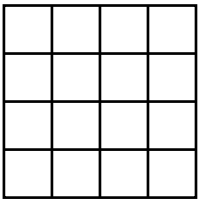
- A. 1
- B. 2
- C. 3
- D. 4
- E. 5

23. Which pattern should come next?



- A. A
- B. B
- C. C
- D. D
- E. E

24. How many ways are there to cut a 4x4 square along grid lines into two equal parts?



- A. 2
- B. 3
- C. 4
- D. 5
- E. 6

25. Which shape should be placed instead of a question mark?

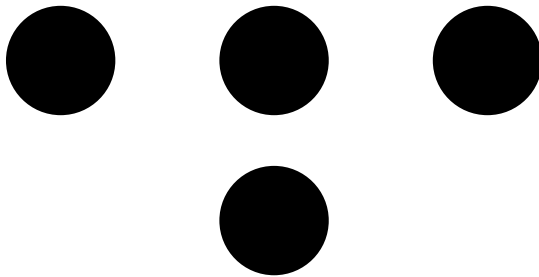


3 → 3

7 → 19

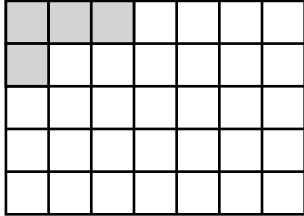
- A. A
- B. B
- C. C
- D. D
- E. E

26. Which number goes in the circle with '?' to follow the system? 3 → 6 → 12 → ?



- A. 18
- B. 20
- C. 22
- D. 24
- E. 30

27. How many white squares must be shaded so that gray squares are three times the white squares?



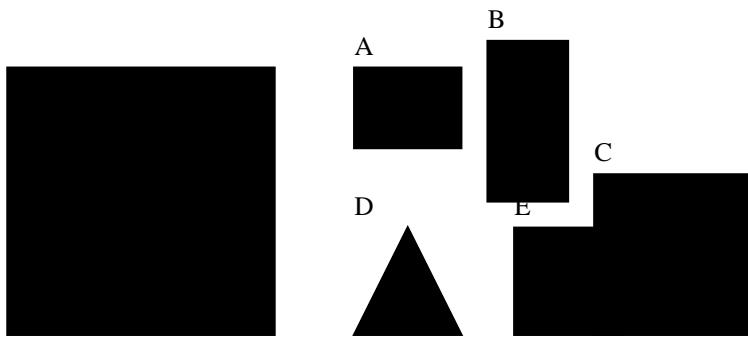
- A. 10
- B. 20
- C. 30
- D. 40
- E. 45

28. How many triangles are there in the figure?



- A. 2
- B. 4
- C. 6
- D. 8
- E. 9

29. A square is cut along grid lines into two parts. One part is shown. Which of the following may be the second part?



- A. A
- B. B
- C. C
- D. D
- E. E

30. A rectangular paper is folded along the dashed line and then cut. Which is the shape when unfolded?



- A. A
- B. B
- C. C
- D. D
- E. E